

BI-METAL

INTENSTM PRO



FEATURES

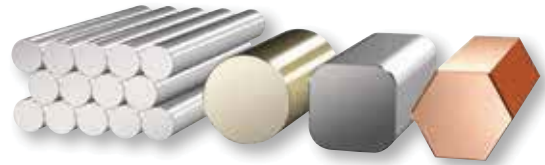
- Complete line with a full range of widths and pitches to suit a variety of cutting needs
- Unique tooth geometry provides intense production cutting in ferrous and non-ferrous metals

BENEFITS

- Faster and straighter cuts
- Improved fatigue and wear resistance

APPLICATIONS

- Ideal for production cutting across a wide range of metals
- For solids and thick wall tubes



Width x Thickness		Pitch/Rake	Material No.
Inches	mm		
3/4 x .035	19 x 0.90	3-4/P	99191*
		4-6/P	99902*
		5-8/P	99903*
		6-10/P	99206*
1 x .035	25 x 0.90	2-3/P	99905*
		3-4/P	99906*
		4-6/P	99907*
		5-8/P	99908*
1-1/4 x .042	32 x 1.10	6-10/P	99318*
		3/P	99484*
		2-3/P	99912
		3-4/P	99913
1-1/4 x .042	32 x 1.10	4-6/P	99914
		5-8/P	99915
		6-10/P	99500
		1-1.2/P	99917
1-1/2 x .050	38 x 1.30	1-2/P	99919
		1.4-2/P	99921
		2-3/P	99923
		3-4/P	99924
1-1/2 x .050	38 x 1.30	4-6/P	99926
		5-8/P	99927
		.8-1.3/P	99928
		1-1.2/P	99929
2 x .063	50 x 1.30	1.4-2/P	99931
		2-3/P	99932
		3-4/P	99933
		.8-1.3/P	99934
2-5/8 x .063	67 x 1.30	1-1.2/P	99937
		1.4-2/P	99941
		.8-1.3/P	99942
3-1/8 x .063	79 x 1.30	1-1.2/P	99943
		1-2/P	99945
		1.4-2/P	99947

P = Positive Rake
 *bi-metal unique® Technology
 Furnished in welded bands for all widths, or in random coils for 3/4" to 1-1/2" widths.
 Note: Special products on request.